

NEXT GENERATION BIOACTIVE BONE GRAFT



# BIOSPHERE<sup>®</sup> PUTTY

*Synthetic Bioactive  
Bone Graft*

# 3RD GENERATION BIOGLASS BONE GRAFT SOLUTIONS

BioSphere® Putty is a bone graft that was specifically developed to maximize the bone healing potential of bioactive glass. Using Synergy's proprietary BioSphere® Technology, BioSphere® Putty is composed of unique spherical particles combined with a resorbable carrier. With the highest bioactive glass content on the market, BioSphere® Putty still maintains excellent handling and is resistant to irrigation.

## THE BIOSPHERE ADVANTAGE:

### *Unique Spherical 45S5 Bioactive Glass*

- Well known and trusted 45S5 bioactive glass composition that has been clinically proven to be an effective bone graft material
- Established bioactivity results in the formation of a bone-like mineral layer on the surface of the particles that improves bone formation

### *Evidence- based 45S5 Osteostimulatory Mechanism*

- 3-D packing of the spheres creates an optimal porosity that allows faster bone growth throughout the entire surgical site
- Sphere shape provides uniform and repeatable resorption and ion release

### *Optimized Particle Size Range*

- Bimodal particle distribution provides maximum bone healing response
- Optimized evidence-based size range results in resorption that matches bone formation

### *Highest Bioactive Glass Content on the Market*

- BioSphere® Putty delivers the maximum amount of bioactive glass particles to the surgical site
- Maintains high graft volume throughout healing; reduces particle settling following carrier resorption

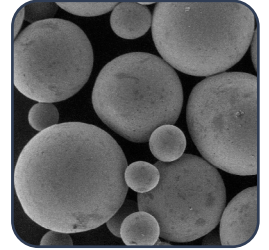
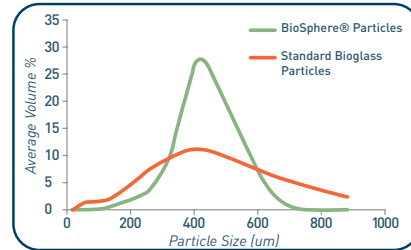


# GROWING BONE FASTER...

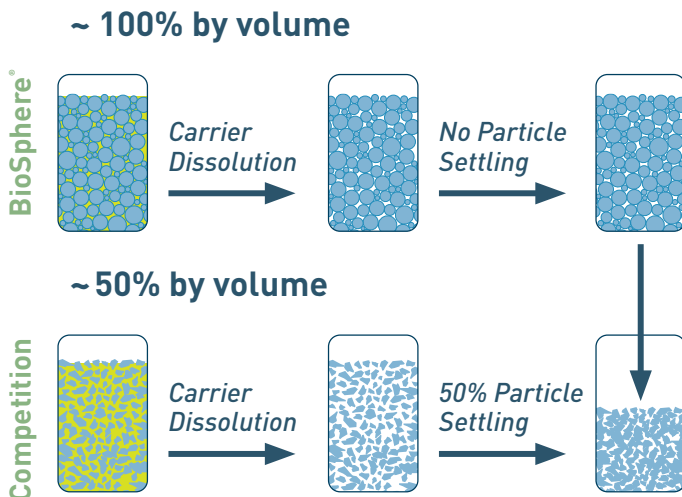
BioSphere® Putty has been specifically engineered to provide a bioactive bone graft with optimal bone healing properties.



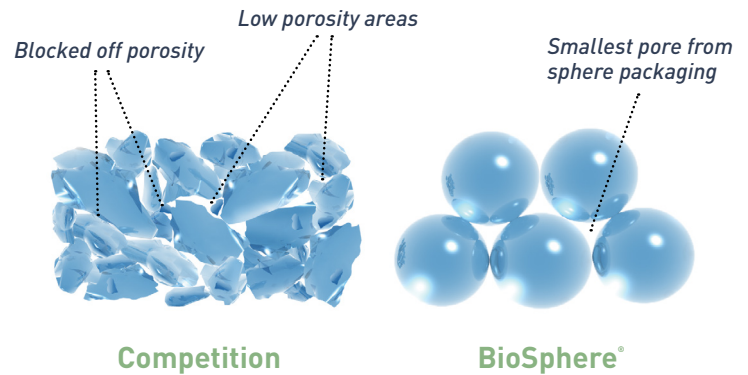
Highest bioactive glass content on the market (80% by weight)



Unique sphere shape and optimal size range provides maximum bone healing response



Maintains high graft volume throughout healing process; reduces particle settling following carrier resorption



Open porosity allows bone formation throughout the entire graft area

**Faster bone growth throughout the entire implant site<sup>1</sup>**

GROUPS	6 WEEKS	12 WEEKS	GROUPS	6 WEEKS	12 WEEKS
BioSphere® Putty			Competitor #2 Silicated Hydroxapatite Putty		
Competitor #1 Bioactive Glass Putty (irregular particles)			Empty Defect		

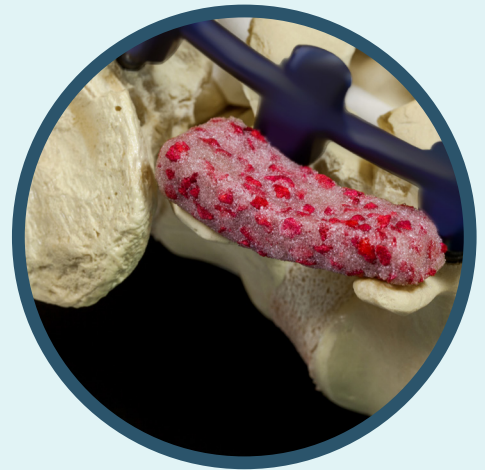
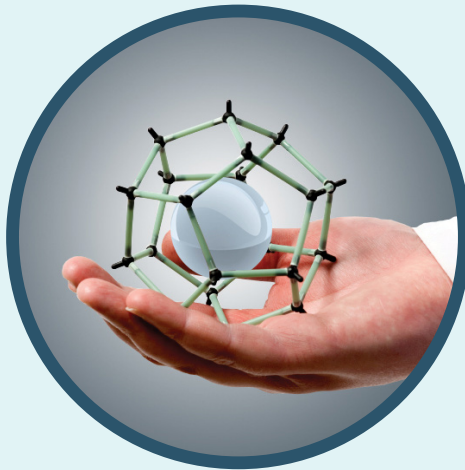
<sup>1</sup> "In Vivo Evaluation of BioSphere® Bioactive Bone Graft Putty: Improved Bone Formation", white paper on file



## Available Sizes

### PART NUMBER DESCRIPTION

BPY-001	1cc BioSphere® Putty
BPY-025	2.5cc BioSphere® Putty
BPY-050	5cc BioSphere® Putty
BPY-100	10cc BioSphere® Putty



**Controlling Surgical Solutions**

The Next Generation  
Synthetic Bioactive Bone Graft

*Distribution Opportunities:*  
[sales@synergybiomedical.com](mailto:sales@synergybiomedical.com)

*Developed and Manufactured by*

**SYNERGY**  
**BIOMEDICAL**  
ADVANCING BIOMATERIAL TECHNOLOGY

565 E. Swedesford Rd • Suite 310  
Wayne, PA 19087

Main Office: 484.902.8141 • Fax: 484.902.8179

Email: [info@synergybiomedical.com](mailto:info@synergybiomedical.com)

[www.synergybiomedical.com](http://www.synergybiomedical.com)