

BIOSPHERE® FLEX SP

*Synthetic
Bioactive Bone
Graft*

3RD GENERATION BIOGLASS BONE GRAFT SOLUTIONS

BioSphere® Flex SP is a bone graft that was specifically developed to maximize the bone healing potential of bioactive glass. Using Synergy's proprietary BioSphere® Technology, BioSphere® Flex SP is composed of innovative spherical bioactive glass granules combined with a porous collagen/sodium hyaluronate carrier.

THE BIOSPHERE ADVANTAGE:

Unique Spherical 45S5 Bioactive Glass

- Well known and trusted 45S5 bioactive glass composition that has been clinically proven to be an effective bone graft material
- Bioactivity results in the formation of a bone-like mineral layer on the surface of the particles that improves bone formation and attachment

Evidence- based 45S5 Osteostimulatory Mechanism

- BioSphere® Flex SP Granules are composed of spherical particles of bioactive glass that are bonded together. The sphere packing creates a 100% interconnected porosity within the granules that supports bone formation
- Sphere shape provides uniform and repeatable resorption and ion release

Optimized Particle Size Range

- Bimodal particle distribution provides maximum bone healing response
- Optimized evidenced-based size range results in resorption that matches bone formation

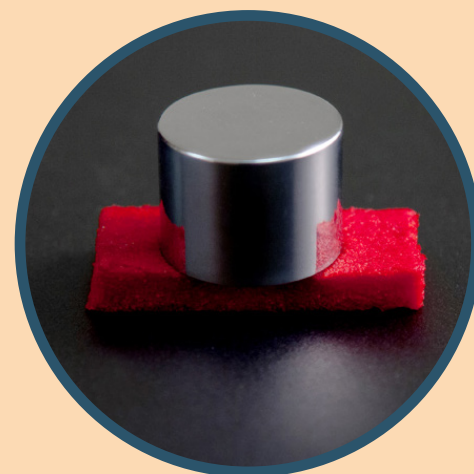
Flexible Collagen/ Sodium Hyaluronate Carrier

- Once hydrated, BioSphere® Flex SP becomes flexible and moldable to aid in surgical placement
- The porous carrier is designed to accommodate bone marrow aspirate

Available Sizes

PART NUMBER DESCRIPTION

BSF-00075	BioSphere® Flex SP, Medium
BSF-00150	BioSphere® Flex SP, Large



Controlling Surgical Solutions

The Next Generation
Synthetic Bioactive Bone Graft

Distribution Opportunities:
sales@synergybiomedical.com

Developed and Manufactured by

SYNERGY
BIOMEDICAL
ADVANCING BIOMATERIAL TECHNOLOGY

565 E. Swedesford Rd • Suite 310
Wayne, PA 19087

Main Office: 484.902.8141 • Fax: 484.902.8179

Email: info@synergybiomedical.com

www.synergybiomedical.com