

# BIOSPHERE<sup>®</sup> FLEX

*Synthetic  
Bioactive Bone  
Graft*

## 3RD GENERATION BIOGLASS BONE GRAFT SOLUTIONS

BioSphere<sup>®</sup> Flex is a bone graft that was specifically developed to maximize the bone healing potential of bioactive glass. Using Synergy's proprietary BioSphere<sup>®</sup> Technology, BioSphere<sup>®</sup> Flex is composed of innovative spherical bioactive glass granules combined with a porous collagen/sodium hyaluronate carrier.

### THE BIOSPHERE ADVANTAGE:

#### *Unique Spherical 45S5 Bioactive Glass*

- Well known and trusted 45S5 bioactive glass composition that has been clinically proven to be an effective bone graft material
- Bioactivity results in the formation of a bone-like mineral layer on the surface of the particles that improves bone formation and attachment

#### *Evidence- based 45S5 Osteostimulatory Mechanism*

- BioSphere<sup>®</sup> Flex Granules are composed of spherical particles of bioactive glass that are bonded together. The sphere packing creates a 100% interconnected porosity within the granules that supports bone formation
- Sphere shape provides uniform and repeatable resorption and ion release

#### *Optimized Particle Size Range*

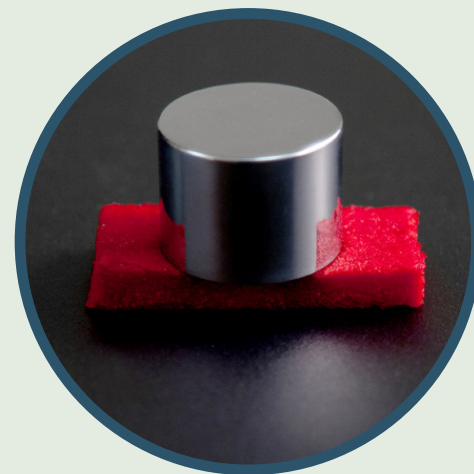
- Bimodal particle distribution provides maximum bone healing response
- Optimized evidence-based size range results in resorption that matches bone formation

#### *Flexible Collagen/ Sodium Hyaluronate Carrier*

- Once hydrated, BioSphere<sup>®</sup> Flex offers an increased tensile strength and becomes flexible and moldable to aid in surgical placement
- The porous carrier is designed to accommodate bone marrow aspirate

## Available Sizes

PART NUMBER	DESCRIPTION
BSF-25050	BioSphere® Flex, Medium
BSF-25100	BioSphere® Flex, Large



**Controlling Surgical Solutions**

The Next Generation  
Synthetic Bioactive Bone Graft

*Distribution Opportunities:*  
[sales@synergybiomedical.com](mailto:sales@synergybiomedical.com)

*Developed and Manufactured by*

**SYNERGY**  
**BIOMEDICAL**  
ADVANCING BIOMATERIAL TECHNOLOGY

565 E. Swedesford Rd • Suite 310  
Wayne, PA 19087

Main Office: 484.902.8141 • Fax: 484.902.8179

Email: [info@synergybiomedical.com](mailto:info@synergybiomedical.com)

[www.synergybiomedical.com](http://www.synergybiomedical.com)